

How to use RPL functions with UniversalBox.

In some cases, you must recalculate UEM/Flash checksum in Nokia phones, like: UEM changing, Flash changing, Flash checksum corrupted by some reason.

UB can help you to solve these problems.

It is working with all ASIC types(ASIC-1 to ASIC-7).

Currently supports the following phones:

1100,1100b,1101,1110,1112_1110i,1220,1255,1260NKW1,1600,2112,2116,2125-2125i,2126,2220,2255,2260
2270,2275,2280,2285,2300,2300A,2355,2600,2600b,2610,2650,2651,3100-3120,3100b,3120b,3105,3108,3125
3128,3152,3155i,3200,3200b,3205,3220,3220b,3230,3300,3300b,3320,3360,3361npw1pa,3510,3510i-3530
3520,3560,3585,3585i,3586,3586i,3590,3595_6010,3600_3620,3610,3650,3660NPW1PA,5100,5100a,5140
5140b,5140i,6012,6015,6020,6020b,6021,6030,6060,6061b_6062b,6070,6100,6101,6101b,6101b_6102b
6101_6102,6102i_6103b,6103,6108,6111,6152,6155,6170,6170b,6200,6220,6225,6230,6230b,6230i,6235
6255,6260,6265,6268,6310,6310i,6340,6340i,6360NPW2,6385,6510,6560,6585,6586,6590,6600,6610,6610i
6620,6650,6651,6670,6800NHL6,6800NSB9,6810,6820,6820b,6822a,6822b,7200,7210,7250,7250i,7260
7270,7280,7360,7380,7600,7610,7610b,7650,7710,8310,8390,8800,8801,8910,8910i,9210,9210C,9210i
9300,9300i,9500,NGAGE,NGAGEQD

There are two cases: if UEM checksum is missing/corrupted or Flash checksum missing/corrupted.

How to repair phones:

1, Connect the phone to the box.

2, If you select „Write UEM”, it will recalculate both UEM/Flash checksum, but you must enter an IMEI or ESN number. In this case, UEM must not contains data.

If you need only recalculate the flash checksum, just press the „Write flash checksum” button.

The software always makes backup RPL file to Uni/Files/Nokia/DCT-4/RPL/ directory.

How to generate RPL files:

If you need to make RPL files for later reuse, you can generate them also here.

1, Enter the IMEI/ESN number to the correct field.

2, Selet the phone ASIC type.

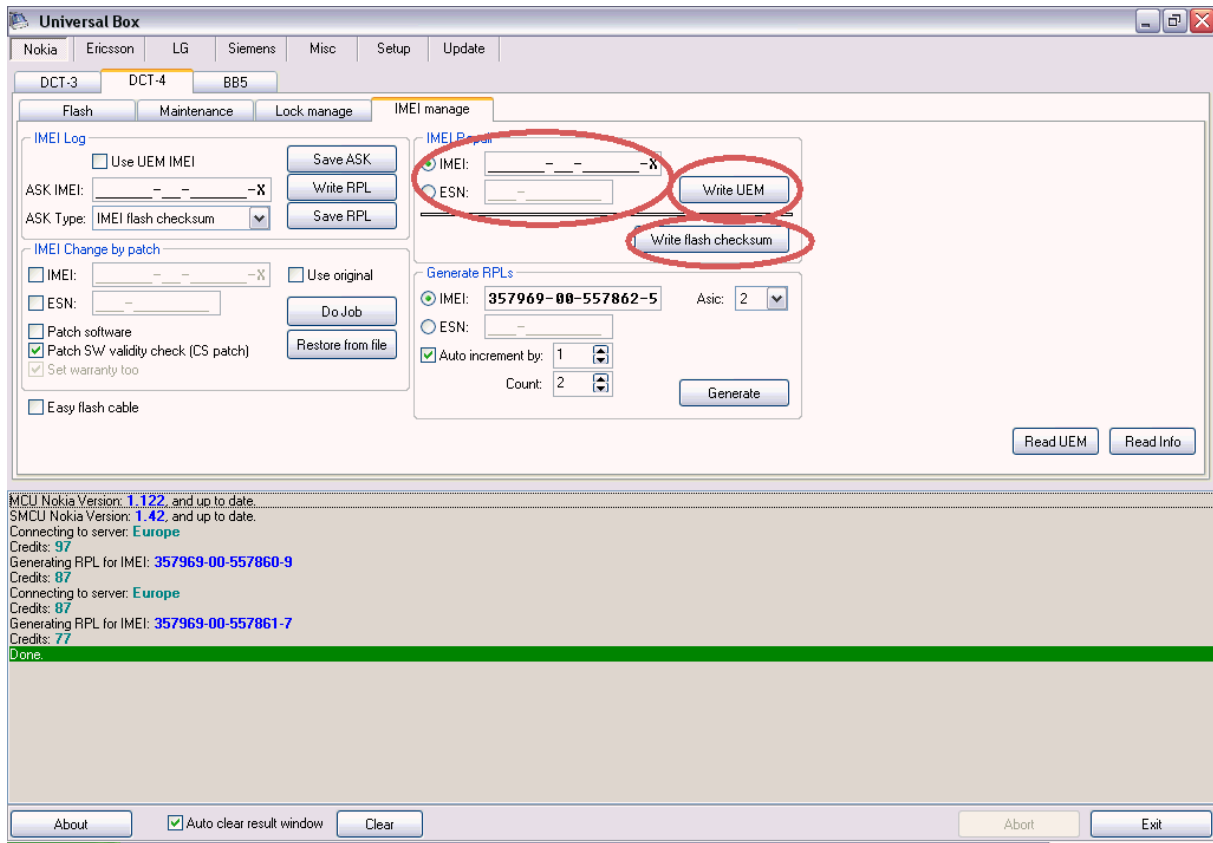
3, If you want to make multiple RPLs, you can do it with select „Auto increment”.

Enter a number to the field. This number means, when an RPL generated, the software increments the number by the entered value.

Enter to the count field, how much RPL need to be generated.

4, Press the „Generate” button.

The software places the RPL files to Uni/Files/Nokia/DCT-4/RPL/ directory.



Best regards, UB team.