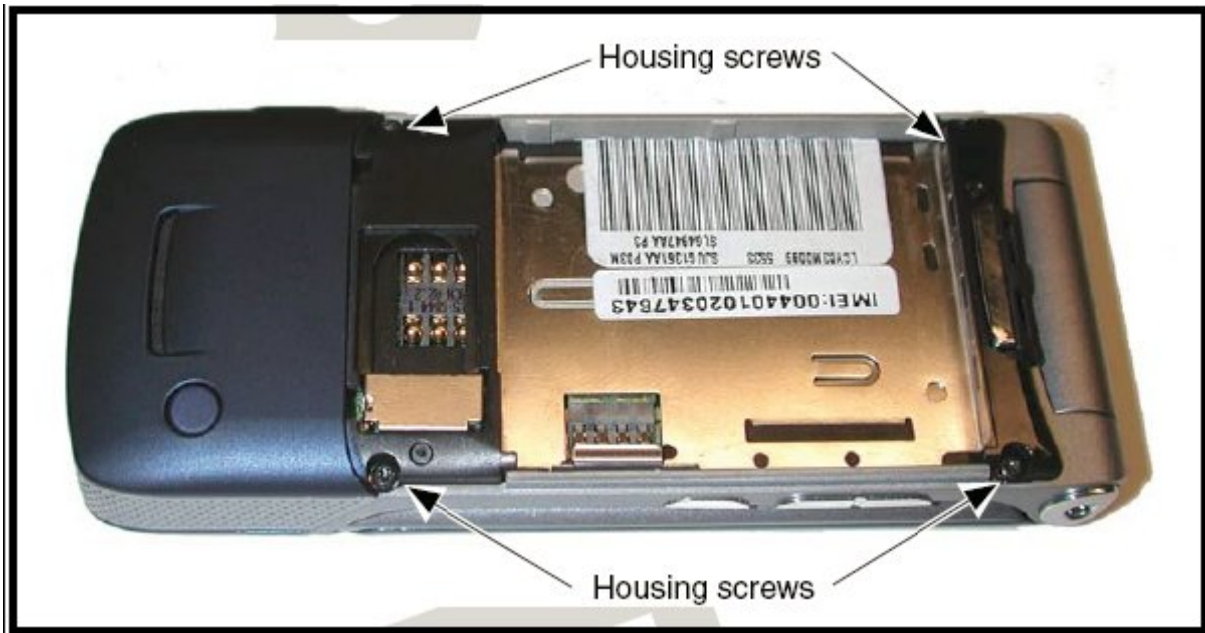


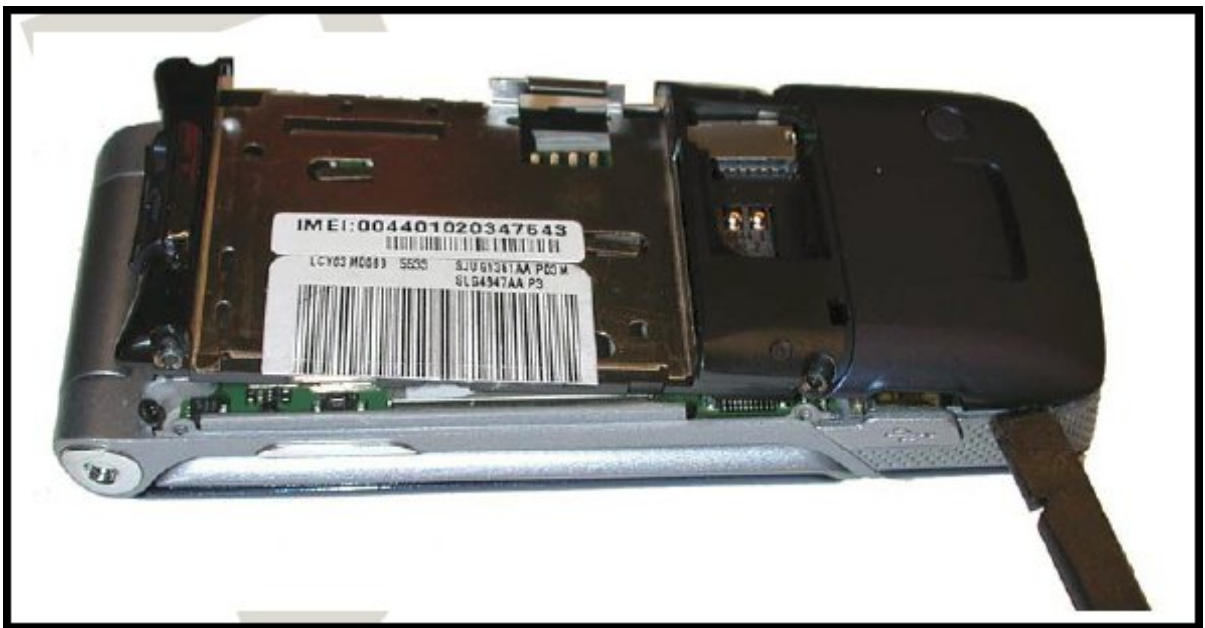
ULTIMABOX

K1 KRZR Manual

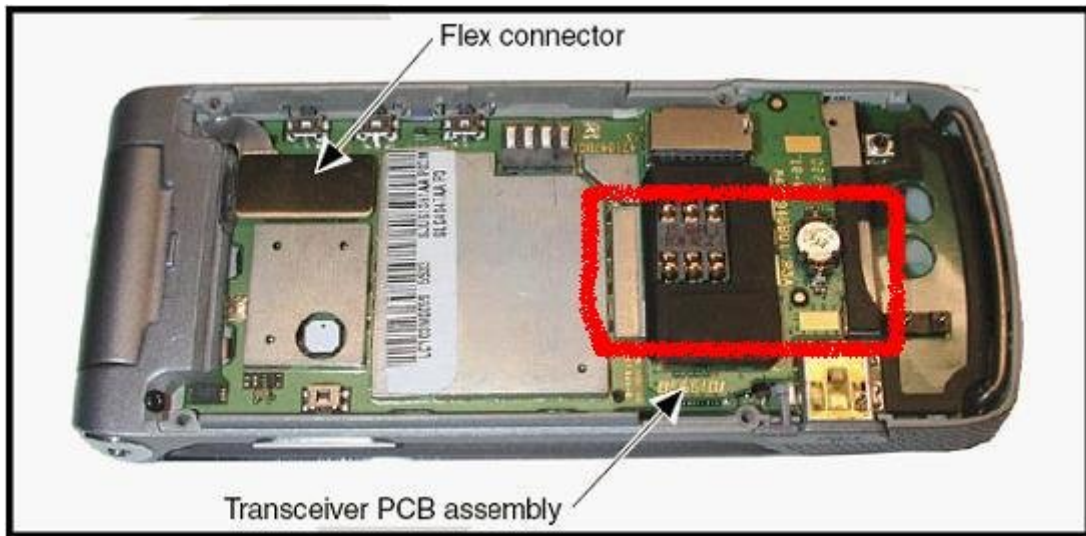
1. Unscrew housing screws,



2. Remove back cover,



3. Disconnect LCD Flex connector and sim holder PCB. TP area is within red square. Cut or desolder shield.



4. Connect TP to GND and while connected, connect battery, and cable. Disconnect battery, and You can proceed with desired operation.

